

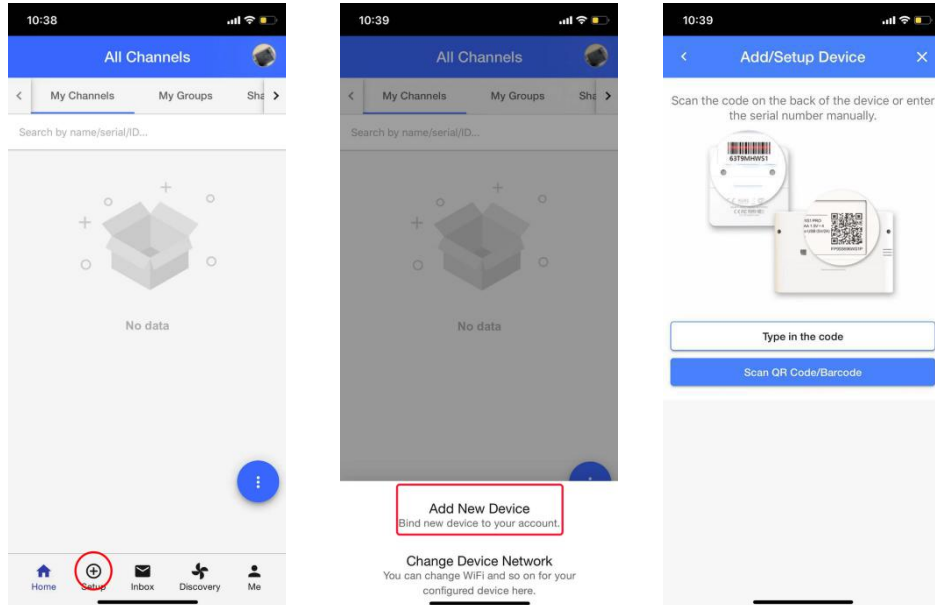
UbiBot APP User Guide

Catalogue

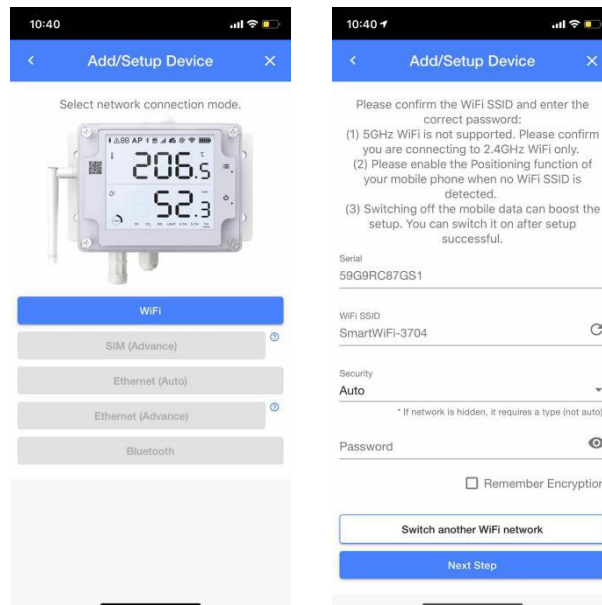
1. Add device.....	3
2. Home Page.....	5
3. Group Management.....	6
4. Device Settings.....	7
4.1 Charts Page.....	7
4.2 Info Page.....	8
4.3 Alert Settings.....	8
4.4 Sensors Settings.....	9
4.5 Device Sharing Function.....	9
4.5.1 Share your devices with others.....	9
4.5.2 View others devices.....	10
4.6 Logs.....	10
5. "Inbox" Page.....	11
6. "Discovery" Page.....	12
6.1. News.....	12
6.2. Help.....	12
6.3. Ticket.....	12
7. "Me" Page.....	12
7.1 Celsius Fahrenheit switching.....	12
7.2 Log out.....	13

1. Add device

1.1. Tap "+" at the bottom of the Home page, and tap "Add New Device"



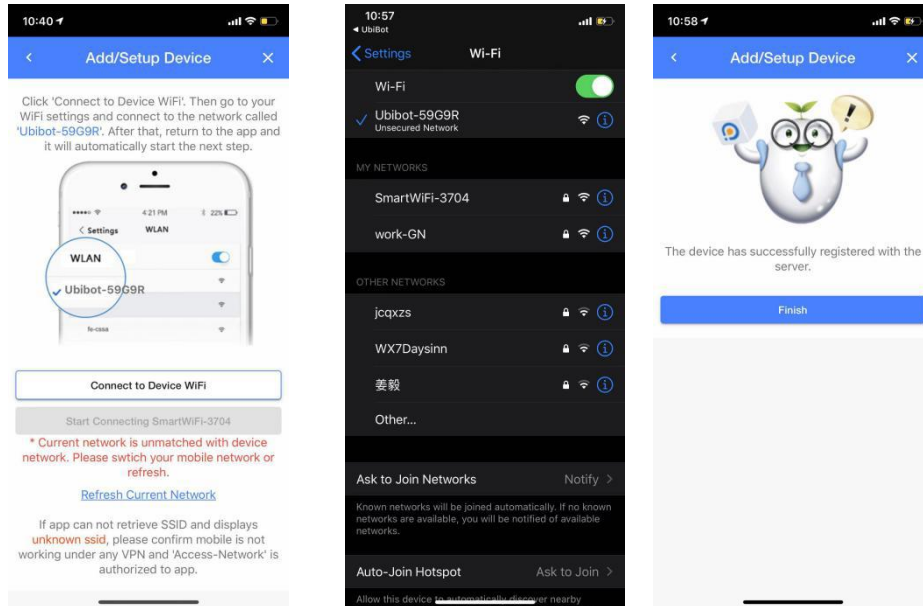
- 1.2. Type in the serial number or scan the QR Code/ Barcode on the back of the device.
- 1.3. Select the network type to continue (WiFi / SIM / Ethernet, depending on specific model purchased). When you choose SIM card, please ensure that the SIM card is properly inserted and be recognised.



- 1.4. Put your device into Device Setup Mode (Please refer to the manuals.).
- 1.5. Confirm whether the name of the WiFi to be connected is correct, enter the WiFi password (the password should be accurate), and tap Next Step.
- 1.6. Tap "Connect to Device WiFi" to switch to the Ubibot WiFi, then the page will

automatically redirect you to the "WiFi Settings" page of your phone.

- 1.7. Find the target WiFi (Ubibot-xxx) and connect it. Then return to the APP.
- 1.8. Tap "Start Connecting". The device will start to connect to the WiFi and make the first time contact with our server. Finally, you will see the success prompt or error code if the process failed.

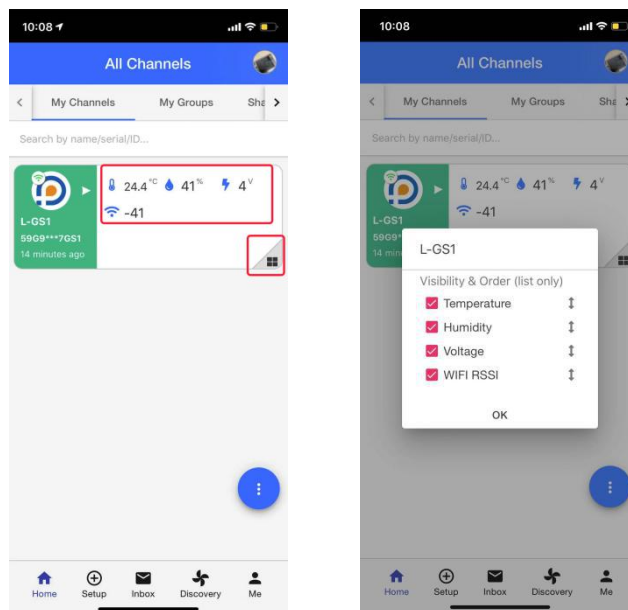


Note: If the device is configured both via SIM card and WiFi, it will take WiFi network as the priority, and will automatically connect to SIM card network after WiFi network disconnects.

2. Home Page

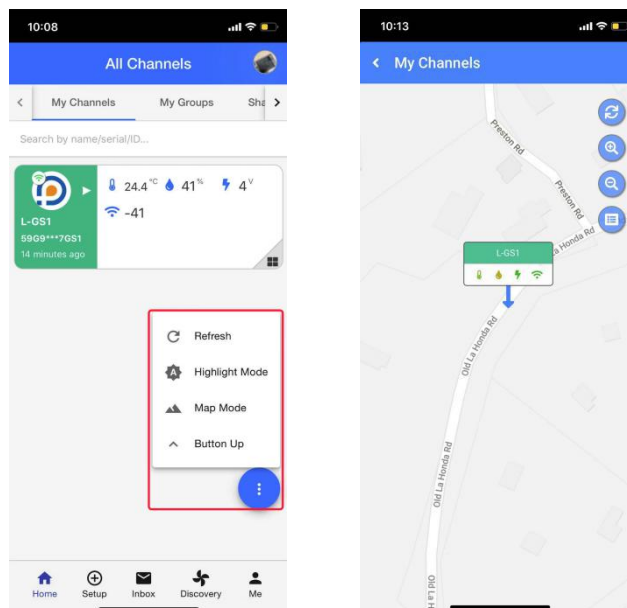
Log in to the UbiBot APP, and you can see all devices bound to your account on the "home" page. You can view the latest data of each device.

Tap the menu bar in the lower right corner to set the data visibility and order. Press and drag the icon in gray, you can re-order the sensors.



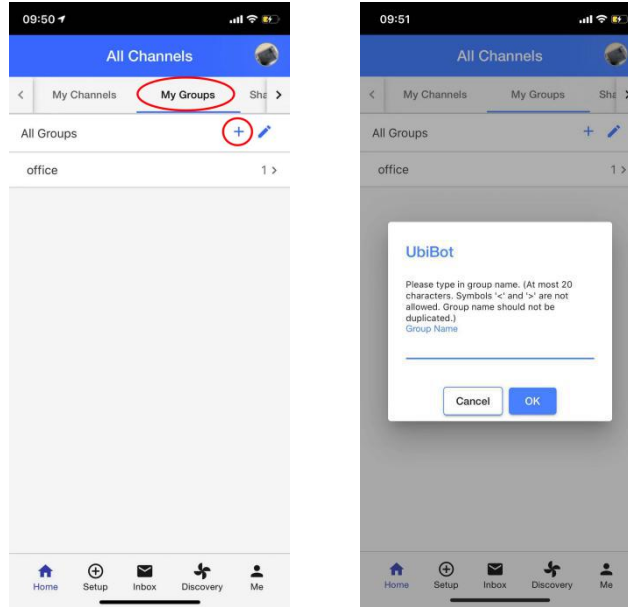
You can also refresh the page and switch to Map Mode.

Note: "Map Mode" allows you to view the general location of your device. The location is acquired according to the IP address so it's not as accurate as GPS location. You can manually modify it in the Settings -- Profile in the web console.

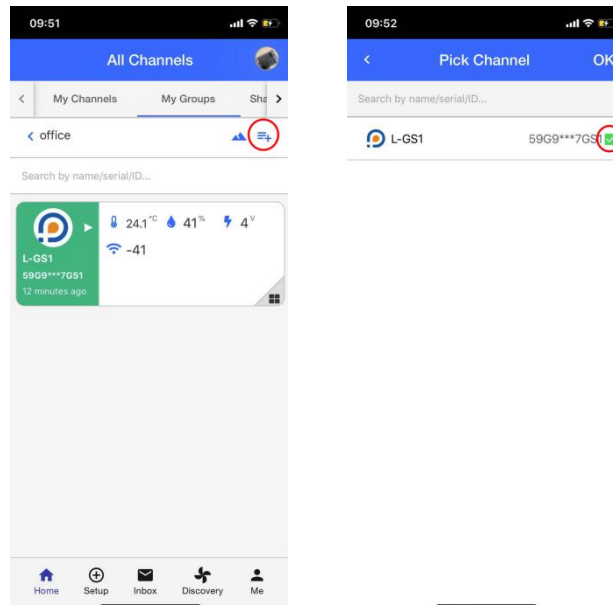


3. Group Management

Tap "My Groups", you can see all the groups you created. Tap "+" to create a new one.

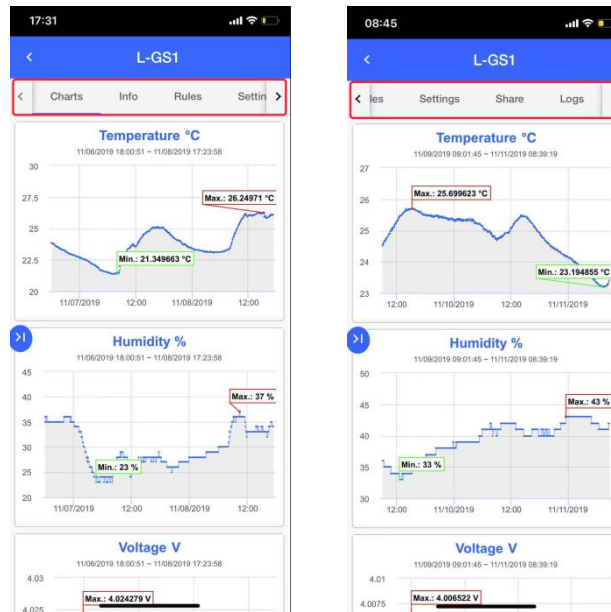


Tap "+" in the group to add new devices.



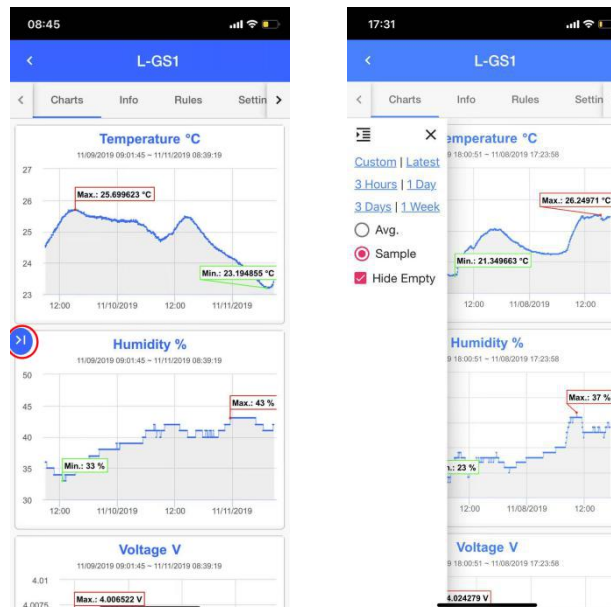
4. Device Settings

Under the device page, you will see some subpages. Tap the “>” or “<” icon to access all of them.



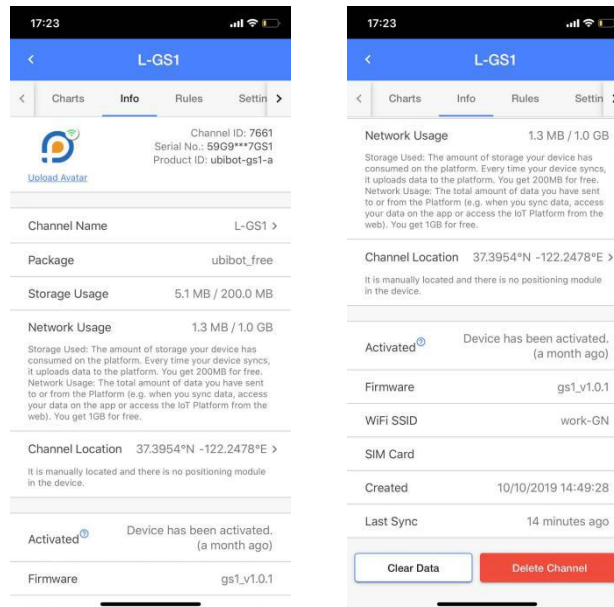
4.1 Charts Page

On the “Charts” page. You can see the data in graphs. Tap the left "arrow" icon to configure the charts in the popup menu.



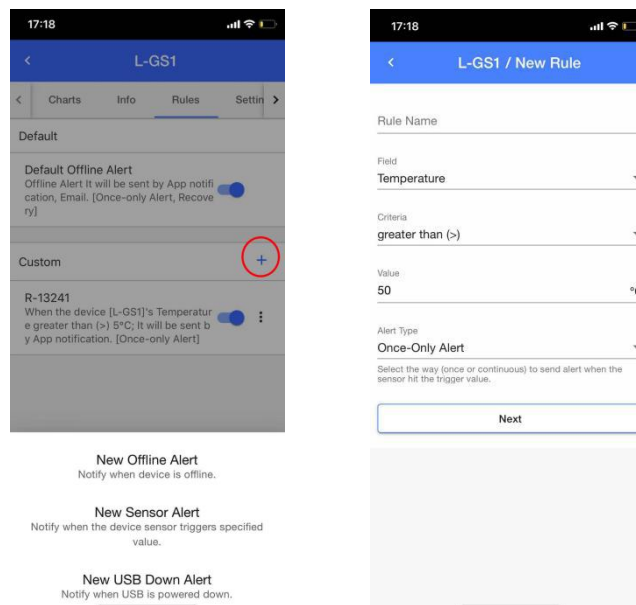
4.2 Info Page

On the “Info” page, you can see the basic device information. You can change the avatar and Channel name.. You can also clear the data and delete device from here.



4.3 Alert Settings

Tap “Rules” to enter the alert setting page. There is an offline alert by default, and you can Tap “+” to add other types of alerts.

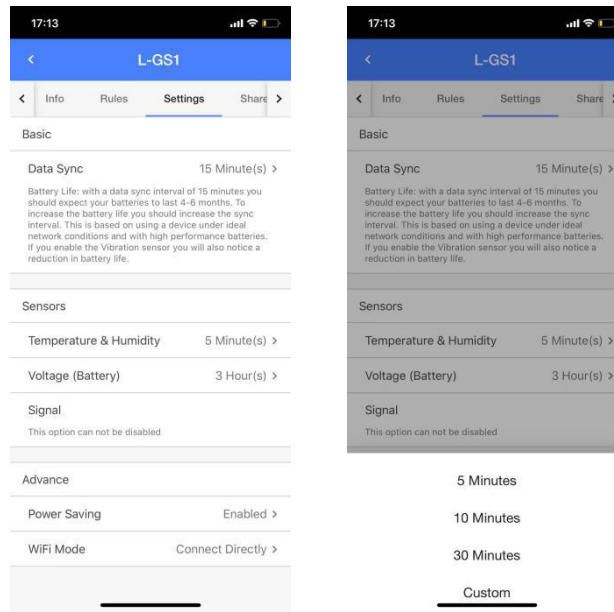


4.4 Sensors Settings

In the Settings page, you can set the data synchronization cycle (how often data is uploaded to the platform) and the sensor sampling rate (how often the sensor collects data).

Tap ">" to select the proper interval or enter suitable minutes by tapping "custom".

Note: Switch for the external RS485 temperature and humidity probe & RS485 soil probe is also in this page.

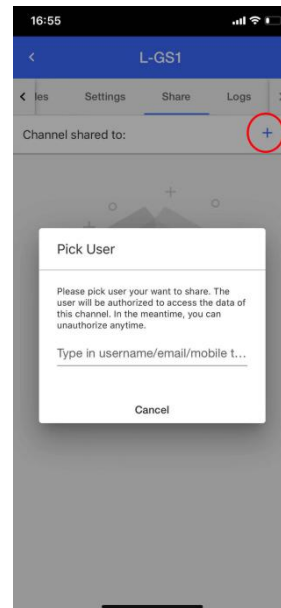


4.5 Device Sharing Function

This function allows the shared person to view and download data. The Shared person does not have permission to operate the device, but he can receive alarms.

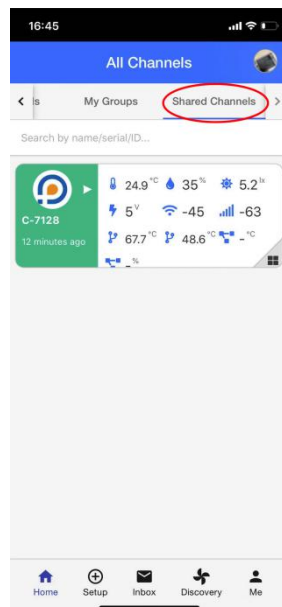
4.5.1 Share your devices with others

1. The person you want to share with needs to download the UbiBot APP and register an account.
2. Enter the device page, tap the "share" button, then tap the "+" button, and enter the account name/email address of the shared person.



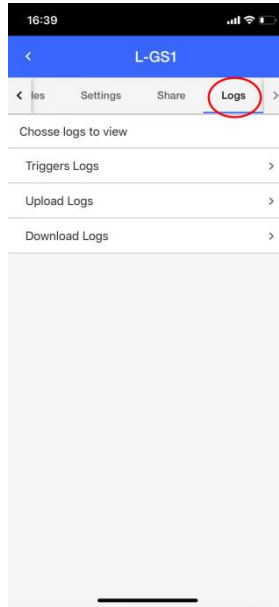
4.5.2 View others devices

Tap the "Shared Channels" in home page, you can see the devices that your friends shared with you.



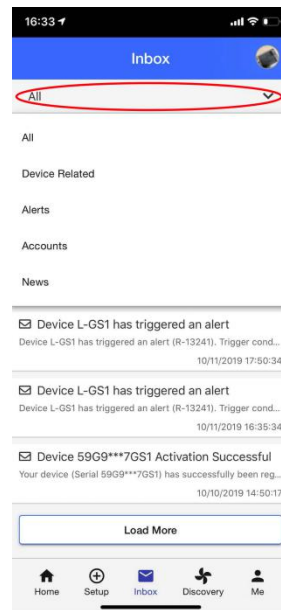
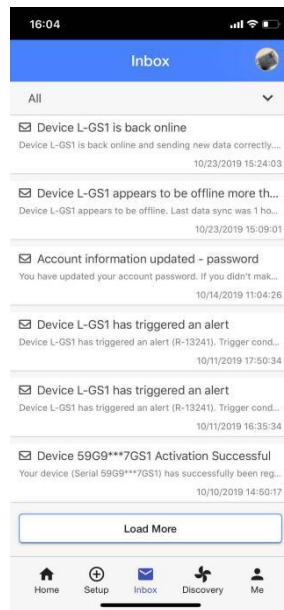
4.6 Logs

Tap the "Log" tab to view logs related to the device. You can see if one alert is sent successfully or not by the Triggers Logs.



5. "Inbox" Page

In the "Inbox page" under the home page, all messages pushed by the APP can be viewed. Tap the drop-down button to expand, and filter the message type you want to check.



6. “Discovery” Page

6.1. News

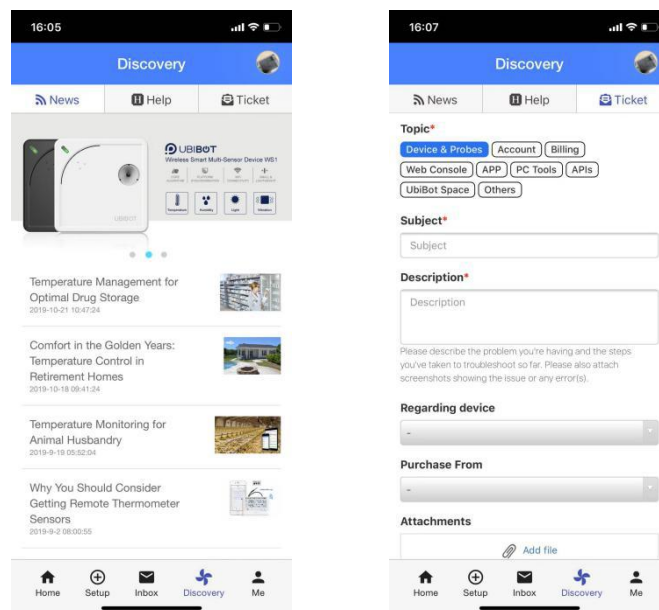
We will post related articles and release of new products here. You can follow us to get notified.

6.2. Help

You can search your questions here.

6.3. Ticket

You can submit your request here if the Help page cannot answer your questions. A team member will follow up with you as soon as possible. We answer most emails in less than 12 hours. and usually less than 2 hours.

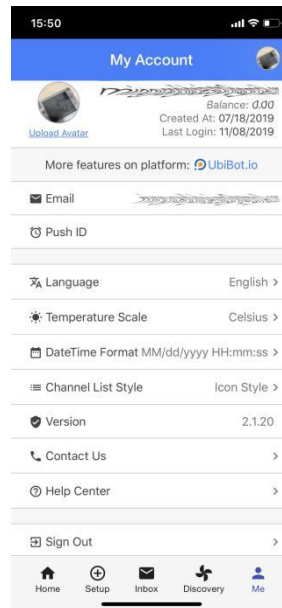


7. “Me” Page

7.1 Celsius Fahrenheit switching

Under the "Me" page, you can view the basic information of the account, and you can set the language, temperature scale and other basic information according to the requirements. In the

"temperature scale" option, you can switch between Celsius and Fahrenheit.



7.2 Log out

Under the "Me" page, Tap "Sign out", you can exit the current account.

For more operations on the account or the device, please log into the web console at: console.ubibot.com