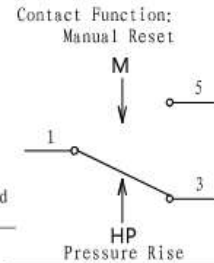
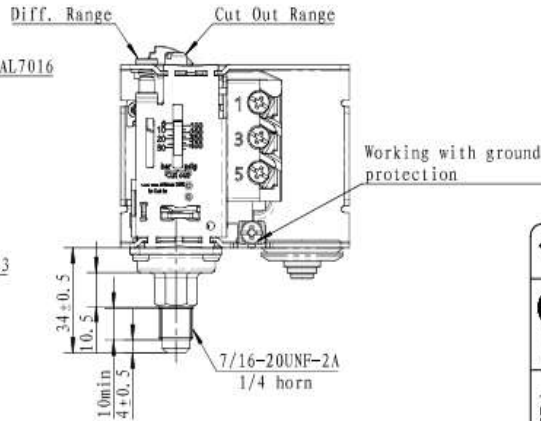
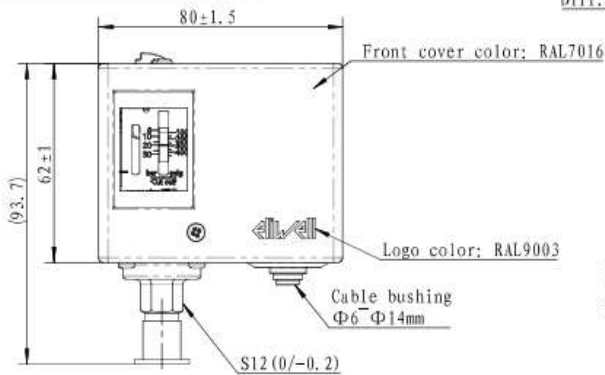


00LSWZOWOEJDLQ

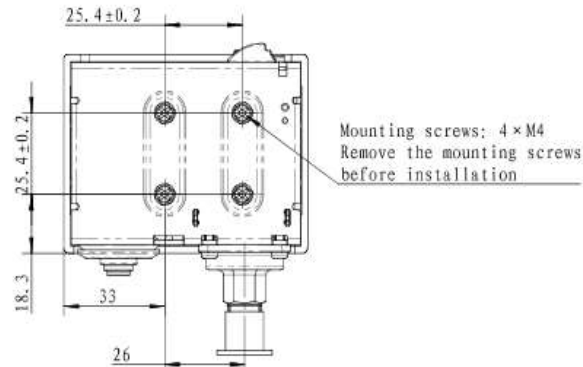
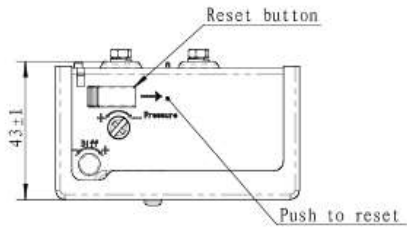


	D16P30M02MS100 D16P HP MAN PEDI/PSR IV (8759/6760)
	RN- 230629-12001
	Made in China
TA: -30/65°C PS: 30bar Range: 6...32bar / 87...464psig Diff. Fix: 4bar / 58psi	

Notes:

1. Refrigerant: R22, R134a, R404A, R407A, R407C, R407F, R422B, R422D, R438A, R448A, R449A, R507, R450A, R452A, R507A, R513A.
2. P. S. (Maximum working pressure): 35bar/507psig;
3. Valve leakage: $\leq 2.83g/a$, at 35bar/507psig;
4. Burst pressure: $> 140bar/2030psig$;
5. Contact resistance: $< 100m\Omega$;
6. Insulation resistance: $\geq 100M\Omega$ (DC500V);
7. Dielectric strength: Withstand AC1968V $\times 1s$, leakage current $\leq 2mA$. No dielectric breakdown or flashover;
8. Electric data:

Rated voltage (V)	AC1	AC3	AC15	DC
	400	400	400	24
Rated amps (A)	16	16	10	16
9. T. S. (Max. Allow Temperature):
Ambient: $-30^{\circ}C$ $+65^{\circ}C$, Fluid: $-40^{\circ}C$ $+120^{\circ}C$;
10. Protection rating: IP30;
11. Other performances following the 2014/68/EU, EN12263 standards;
12. Cut out and Cut in pressure gauges: Cut out-Diff. = Cut in.



Matters need attention:

1. The setting accuracy of Cut out pressure and Cut in pressure on the low and high side of the system should be measured and adjusted with a precise pressure gauge. The scale set on the product is an approximation only for reference.
2. When working, please use the grounding protection.
3. Cut out pressure on the low side must be higher than the absolute vacuum pressure ($p_e = -1 bar$) !
4. During installation, Pay attention not to connect the high pressure (HP) part with the low pressure.
5. Do not replace installation screws of different lengths without authorization, so as to avoid affecting internal mechanism action or damaging internal structure.
6. When installing the controller, the joint and nut must be tightened with two wrenches.
7. When installing the outer cover of the controller, the outer cover shall be installed from top to bottom, and the tightening torque of the outer cover shall not be greater than 0.55N.m.

MODEL	Pressure range [barg]/[psig]	Diff. range [bar]/[psi]	Reset	Factory setting			
				Cut out [bar]/[psi]	Cut in [bar]/[psi]	Diff. [bar]/[psi]	Use terminals
D16P30M02MS100	6...32/87...464	Fix. 4/58	Manual	20 ± 0.5 / 290 ± 7	16 ± 0.5 / 232 ± 7	4 ± 0.5 / 58 ± 7	1-3

				Pressure Controller		D16P30M02MS100		
						Marks	Weight	Ratio
Label NO, Change document NO, Signature, Date				S		283.68	1:1.5	
Designer				Standard		Total		
Checker				Order		Page1		
Verifier				Approval		Eliwell Controls S.p.A. Via dell'Industria 15 - Z.I. PAVOLI 32010 Alpe di Siusi - Italy		
Processor				Date				